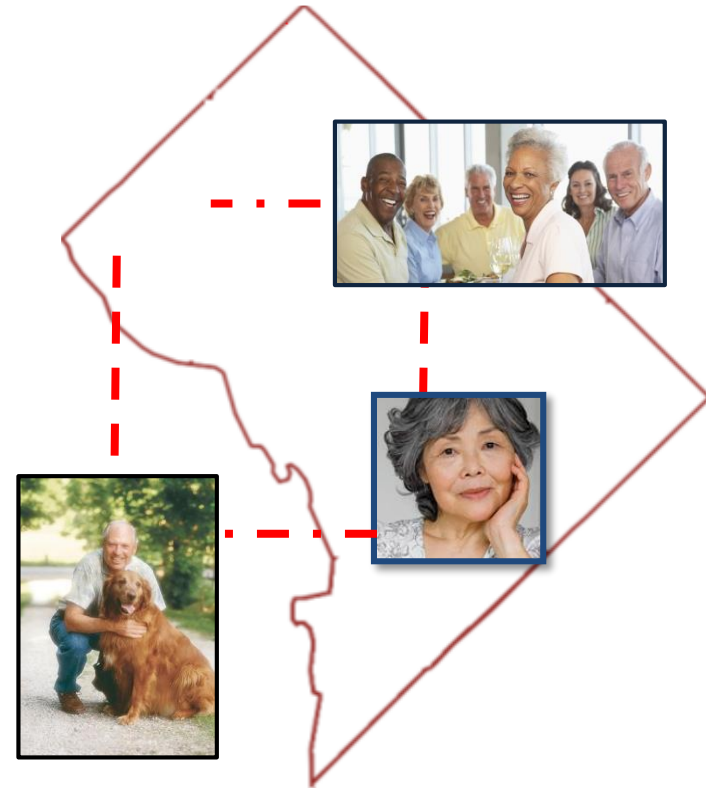




The Key to Your Community

Capitol Hill Village Emergency Preparedness Planning

April 25, 2017





Emergency Response Plan

Goal:

Create an emergency response plan wherein residents are individually prepared, connected to community resources and informed about issues. Also, CHV has a network of volunteers and communication mechanisms to ensure seniors' safety.

Capitol Hill Village Emergency Response Plan

Needs:

Community engagement to:

- Learn how to be prepared individually
- Communicate among neighbors and help others
- Collect information about individuals for emergency response and outreach
- Identify, train and communicate with volunteers of all abilities to be a part of preparedness and response. .

Capitol Hill Village Emergency Response Plan

Next Steps:

- Increase knowledge and awareness of community and personal risk
- Develop trainings and materials for individual readiness
- Develop communication plans
- Recruit and train volunteers
- Compile into a emergency response plan

National Health Security Strategy

- President's Directive (PAHPRA) 2009, 2014
- Two overarching goals:
 - Build **community resilience**
 - Strengthen and sustain health and emergency response systems.





Community-based organization improving lives for seniors and making Capitol Hill the best place to live a long life.

- Seniors have knowledge, resources and confidence to independently live in community through.
 - Professional Care services
 - Volunteers support
 - Social and educational programs
 - Transportation options
- Service Boundaries: K Street NE to M Street SE, North and South Capitol Streets to 19th Street, SE and NE

Meet the Team

- Geoff Lewis
- Mike Grace
- Joseph Cooney
- Peggy Keller

Are You and Your Neighbors Prepared for an Emergency?

- Capitol Hill and Washington DC are at risk for natural and man-made disasters
 - Long Term Power Outage
 - Extreme weather – Heat- Snow
 - Pandemic
 - Active shooter
 - Terrorist with Biological/ Chemical Weapons

Washington DC is a High Threat Target

- National Icons
- Seat of Power
- Large Number of NSSE (National Special Security Events- Inauguration, Nuclear Summit)
- Transportation Hub

Past Disasters



Terrorist Attack
September 11, 2001



Hurricane Katrina
August 23, 2005



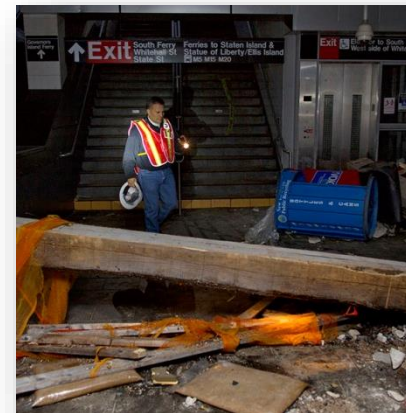
Deepwater Horizon Oil Spill
April 20, 2010



Hurricane Irene
August 20, 2011



Derecho Windstorm
June 29, 2012



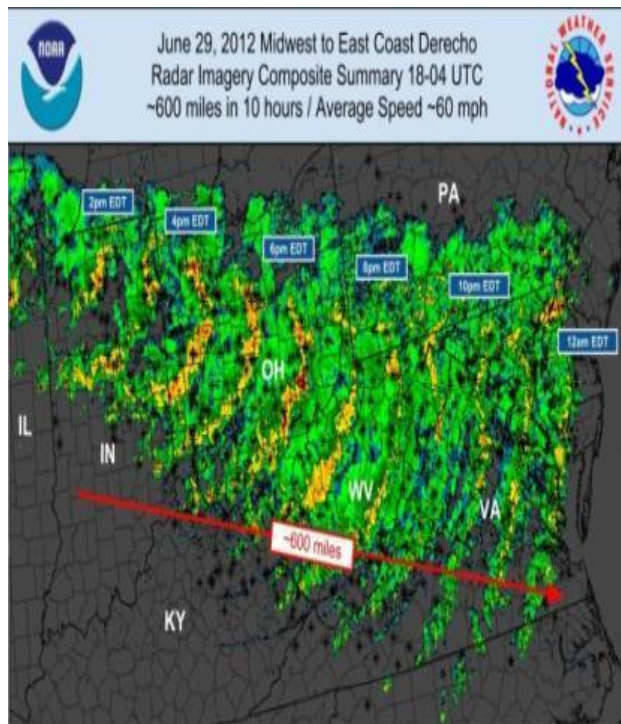
Hurricane Sandy
October 22, 2012

DC Climate Adaptation Plan Projections



- Projections –increased temperature and frequency
- Summers warmer
- Hot days (over 95)
- Multi-day heat waves
- Extreme weather events

DC Derecho Impact



Over 800 preliminary thunderstorm wind reports indicated by *
Peak wind gusts 80-100mph. Millions w/o power.

Summary Map by G. Corbin
NWS Storm Prediction Center

- Derecho- June 28- July 8, 2012
- Extreme weather – Heat wave
- Many records broken- Reagan airport
- Straight line winds- 80-100 mph
- Extreme temperatures
- 11+ consecutive days over 95
- 4+ consecutive days over 100
- 8+ nights w/ minimum over 75
- 3+ nights w/ minimum over 85
- Extended Power outage

Developing an Emergency Preparedness Plan

Preparedness is:

- Pre-emergency planning
- Knowing what resources are available
- What actions to take in the event of an emergency

Preparedness Planning involves the coordination of the CHV members, the Planning team, and community partners.



Why is an Emergency Preparedness Plan Important?

#1 Keep our families, neighbors, our most fragile friends safe



#2 Resources are limited.
Reduce reliance on government



#3 Vulnerable Populations may be less self-sufficient during disasters

#4 Reduce stress on health care systems



Severe Weather Scenario

- (WRC-TV) June 29, 2012: Derecho/Heat Coverage - Pt. 8 (5:45-7:00p)
- Jefferson's Derecho (expanded)
-

Discussion

- Power Outage
 - How do we Prepare
 - What Action do we take
- Extreme Heat
 - How do we Prepare
 - What Action do we take

Discussion

- Do you have a Plan?
- Do you have?
 - Contact info for family, friends, medical support
 - List of medications
 - Spare batteries
 - Cooler for Medication
 - Alternative sites- dialysis

EP Plan Components

- Communication, Notification
- Resources
- Training
- Continuity of Operations



Training

- CERT
- CPR/ First Aid/ AED
- Mass Care, Sheltering
- Evacuation/ Shelter in place
- Senior Awareness
- Sensitivity for those with access and functional needs
- Pet Preparedness
- Disaster Behavioral Health



Next Steps

- Stakeholder meeting- April 25
- Committee Meetings
- Project Management –
 - Plan components
 - Develop timeline
 - Draft Plan
- Conduct training
- Socialize Plan
- Conduct exercises

Special Considerations for Seniors



Mobility &
Transportation



Hearing/Visual



Behavioral Health



Special Considerations for Seniors



Literacy & Language



Crime Victimization



Fear of Institutionalization



Concern about Pets



How to Support Seniors

- Connect
- Listen
- Ask – Don't Assume!
- Be Honest – Don't Lie!
- Be Patient – Stay calm
- Be Aware



Prepare for Everywhere



family



neighborhood



workplace



global

EMERGENCIES DO HAPPEN.



Know your neighbors. Plan together. Be ready.